

This target is a modification of the original PhotoDisc test image. Please refer to the included PhotoDisc documentation for more information on the original target.

We made several changes to assist with evaluating profiled images (refer to crop below):

- A. First, the Kodak Color Control and GretagMacbeth ColorChecker charts are filled with actual values from averaged measurements of several charts rather than the original PhotoDisc capture. Prints of these targets can be evaluated against the actual charts.
- B. The Kodak Gray Scale chart uses measured values converted to the closest neutral tones. The background is also set to a neutral. Pure black (K) and white (W) patches were added, and squares 18 and 19 were darkened to use the full tonal range.
- C. Two Granger Rainbow (full printer output spectrum) variations are included to cover the full range of colors a device is capable of reproducing. Check these for overall color output smoothness and the effect of different rendering intents.
- D. A series of primary color gradients are included. The most saturated colors in these ramps can not be reproduced by any printer or monitor. These can be used to visually judge overall output linearization, but the printed version will not match your monitor unless soft proofing is used.
- E. Two sets of near-neutral hue variations are included. Both are centered around neutral gray. The surrounding colors are spaced evenly apart in CIE LAB color space.
- F. Neutral gradient in 5% steps from black to white. This is useful for judging both the linearity and neutrality of your printer.

The image is in the Adobe RGB color space. The large version is at the original PDI size for a 10x14 sheet, while the small version is for an 8x10 print. Resize as needed.

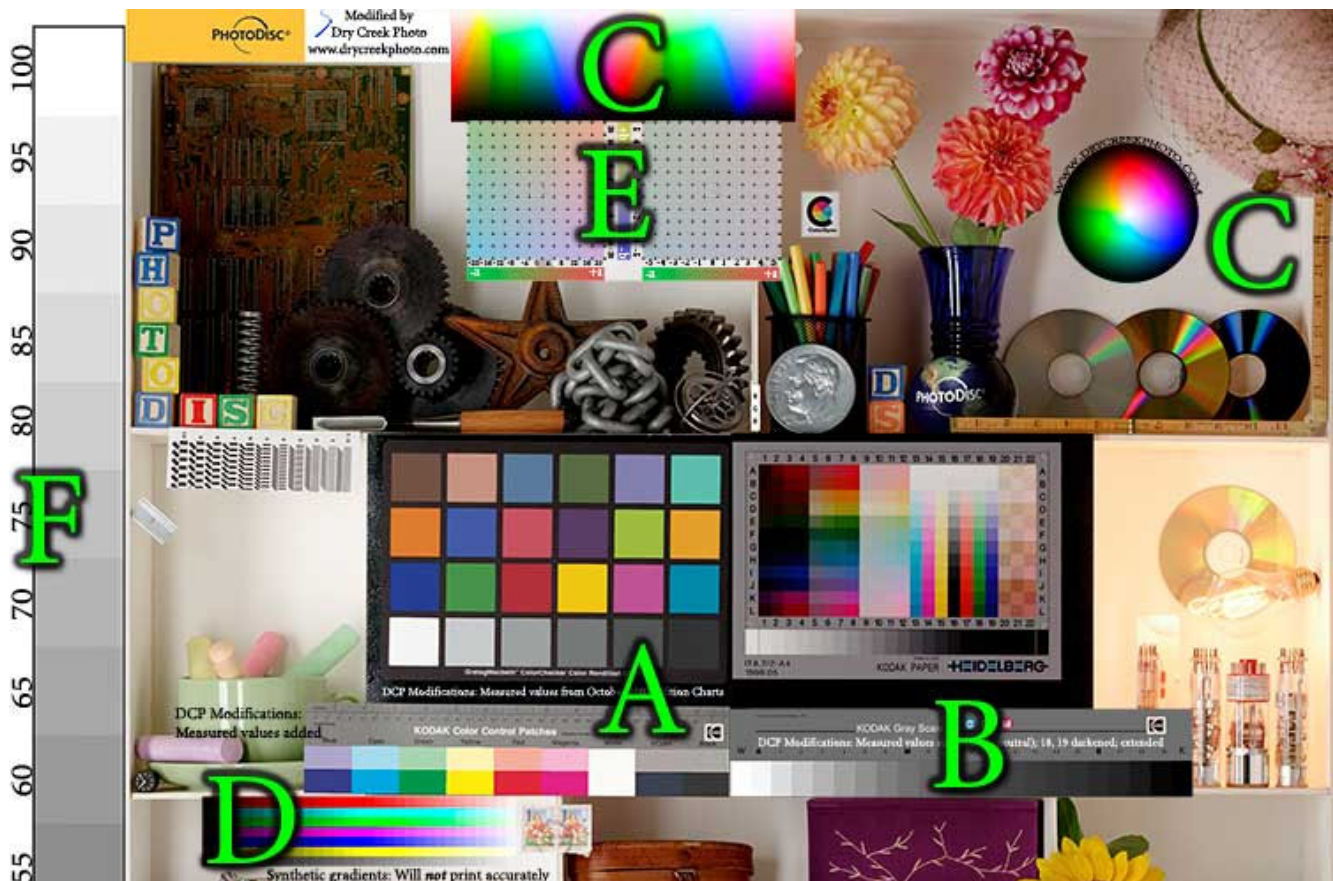


Image License

The enclosed image is distributed to you by Dry Creek Photo. By using the image you acknowledge your agreement to the terms below. If you do not agree to these terms, do not use the image.

This target may be freely reproduced, copied, or modified as long as the following conditions are met:

- Both this license and the enclosed PhotoDisc license are included in any distribution.
- All terms in the enclosed PhotoDisc license are adhered to.
- You do not sell the image.
- You do not remove, modify, or distort the insignia or logo of any company including Apple Computer, Dry Creek Photo, GretagMacbeth, Heidelberg, Kodak, Munsell, or PhotoDisc.

THIS IMAGE IS PROVIDED "AS IS". DRY CREEK PHOTO EXPRESSLY DISCLAIMS ALL WARRANTIES EITHER EXPRESS OR IMPLIED INCLUDING ANY IMPLIED WARRANTY OF MERCHANTABILITY OR FITNESS FOR A PARTICULAR PURPOSE. IN NO EVENT SHALL DRY CREEK PHOTO, ITS REPRESENTATIVES, OR EMPLOYEES BE LIABLE FOR SPECIAL, INCIDENTAL, CONSEQUENTIAL, PUNITIVE, INDIRECT, OR OTHER DAMAGES, INCLUDING BUT NOT LIMITED TO, LOSS OF USE, DATA, IMAGES, PRINTS, OR PROFITS, HOWEVER CAUSED, AND WHETHER OR NOT DRY CREEK PHOTO WAS ADVISED OF THE POSSIBILITY OF ANY SUCH DAMAGES. WE RESERVE THE RIGHT TO UPDATE THIS POLICY AT ANY TIME AND WITHOUT PRIOR NOTICE. Some states do not permit the exclusion of implied warranties and you may have other rights that may vary from state to state.

Please email with questions:
web_info@drycreekphoto.com